



GHARBI I

RESIDENCES

CRAFTING DREAMS, **BUILDING LEGACIES**

At Rabdan Developments, we exceed the ordinary and redefine the essence of affordable luxury living in Dubai. Our commitment to excellence is reflected in every project we undertake, where high-end luxury seamlessly intertwines with sophisticated design, setting a new standard in comfort and leisure. As a prominent Emirati developer based in Dubai, we take immense pride in our innovative approach to construction and development seamlessly blending comfort with leisure to create architectural marvels in premium locations.



GHARBI I

RESIDENCES

ABOUT THE PROPERTY

Represents the culmination of Rabdan's fourth project, meticulously crafted by esteemed architects known for their unwavering dedication to excellence in design and quality. Our commitment to perfection guarantees meticulous attention to every detail, ensuring your complete satisfaction.



SEAMLESSLY LINKED :

GHARBI | RESIDENCES

Is Located At The Nearest Attraction

EASY ACCESS TO :

- Sheikh Zayed Road
- Sheikh Mohammed Bin Zayed Road
- AlKhail Road
- Hessa Street

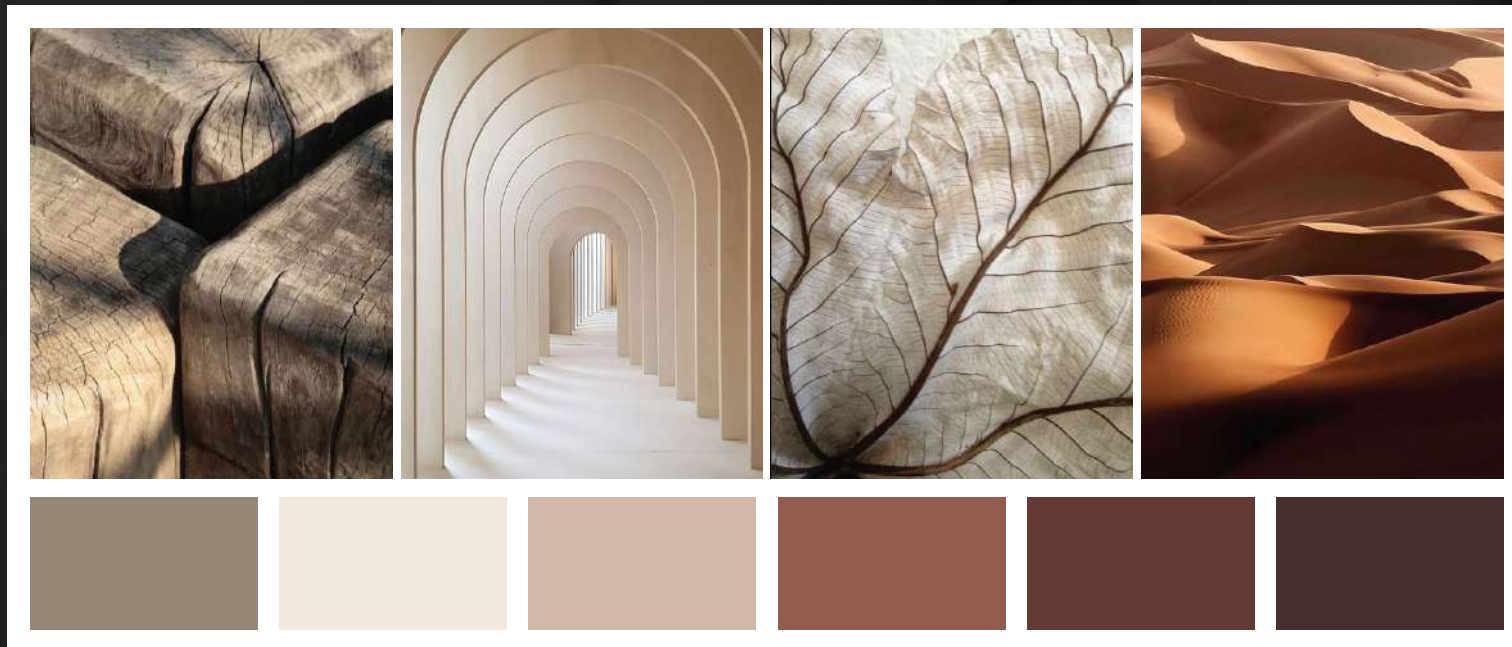
PROXIMITIES :

- **02 min** to Dubai Miracle Garden
- **10 min** to Palm Jumeirah
- **20 min** to Expo Dubai
- **25 min** to Dubai Mall & Downtown
- **30 min** to Dubai International Airport



BUILDING EXTERIOR

Draws inspiration from the forms and colours of nature and the surrounding environment. It aims to create a calming and soothing environment that evokes a sense of relaxation and comfort.

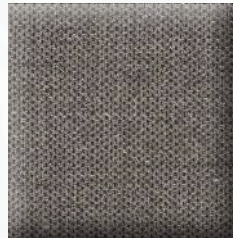
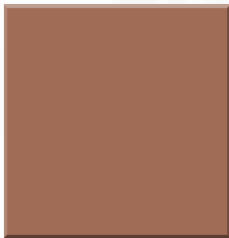


- Sleek Finishes
- Integrated Landscaping
- High-Quality Materials

- Minimalist Design
- Dramatic Skyline Views

BUILDING INTERIOR

- Open Floor Plans
- High-Quality Fixtures And Finishes
- Natural Light
- Fine Furnishings
- Fully Fitted Kitchen With Built In European Made Appliances
- Smart Home Technology
- European Made Sanitary Items



BUILDING CONFIGURATION

GHARBI 1 IS MODERN AND HIGH TECH
RESIDENTIAL BUILDING.

G + 3 P + 12 + 2 R

168 UNITS

48

STUDIO + BALCONY

96

1 BHK+ BALCONY + POOL

24

2 BHK+ BALCONY + POOL





**Experience A Luxurious
Redefinition Of Elevated Living**



RABDAN
DEVELOPMENTS

ELEVATOR >

Lobby

EAT
SLEEP
GAME
REPEAT

Indoor Club Lounge



Gaming Room



RABDAN
DEVELOPMENTS



Indoor Cinema



Living Room



Bedroom



Kitchen



Kitchen

GET
FIT
DON'T
QUIT



RABDAN
DEVELOPMENTS

FIT BODY



LOADING... 53%

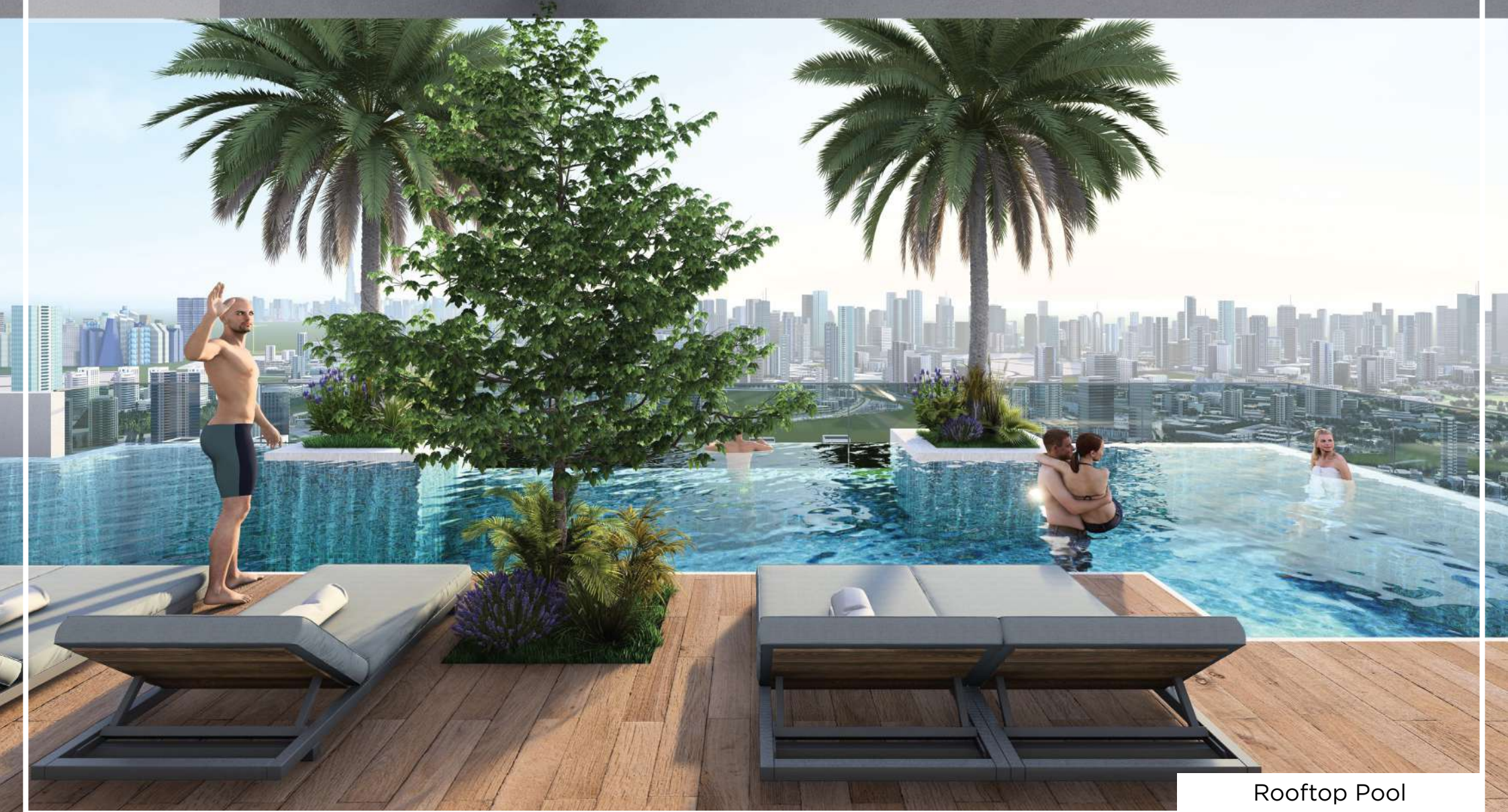
GYM



GYM Lockers

The background of the image is a close-up, top-down view of clear blue water. The surface is covered in intricate, organic patterns of light and shadow, resembling ripples or the play of light on water. The colors range from deep cerulean to bright, almost white highlights where the light reflects. A thin, white rectangular border frames the entire image.

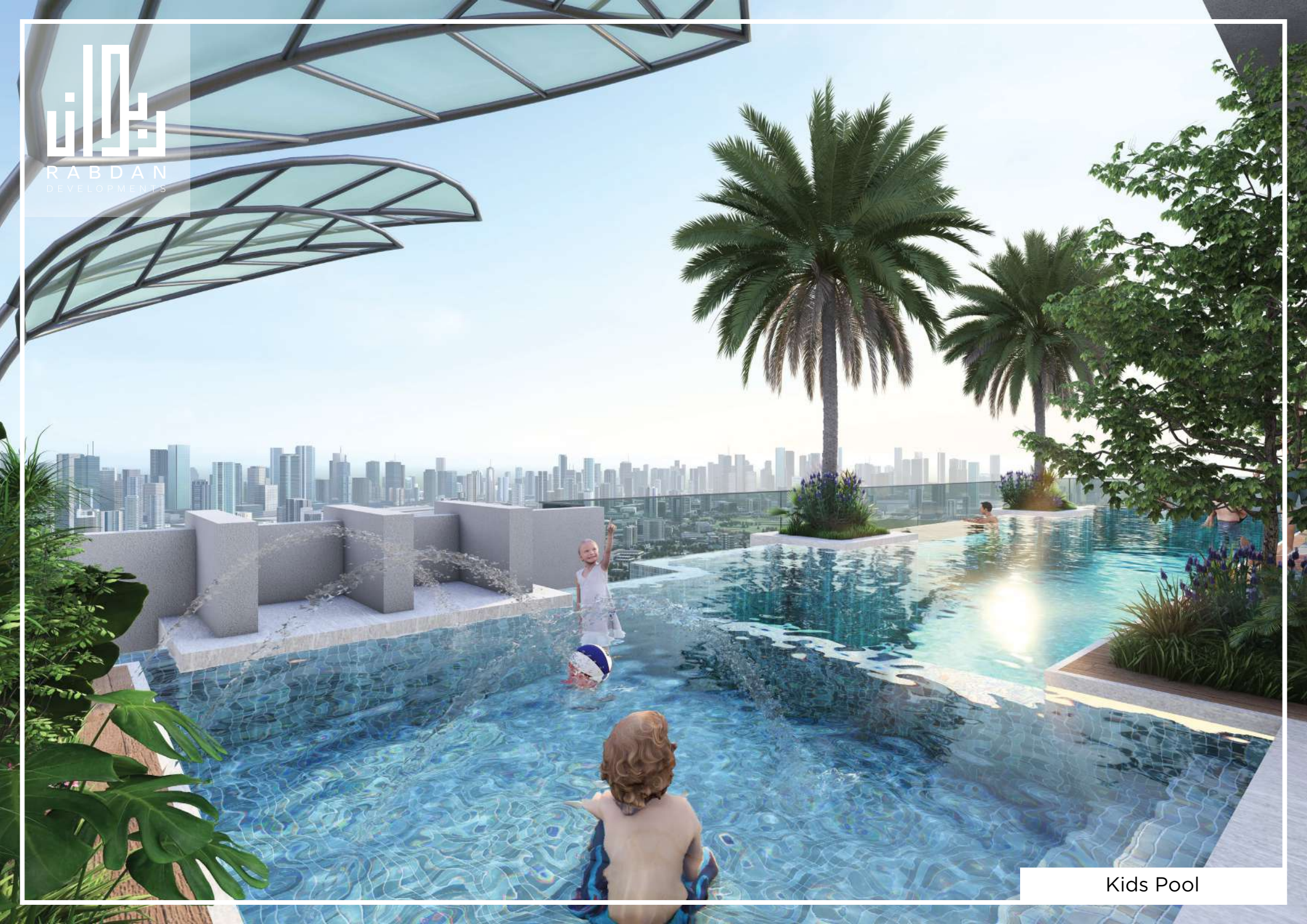
Find Your Perfect Haven Tailored
Residences for Every Lifestyle



Rooftop Pool

رَبْدَان

RABDAN
DEVELOPMENTS



Kids Pool

رَبْدَان

RABDAN
DEVELOPMENTS



Rooftop Cinema



BBQ Lounge



Kids Area

AMENITIES



Swimming pool
adults / kids



Sauna &
Steam Room



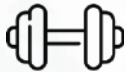
Yoga Space



24/7 Security



Barbecue Area



Indoor Gym



Car Valet



Rooftop cinema



Club Lounge



Gaming room



Kids Playground



Outdoor Lounge



Business hub





TANAMI
P R O P E R T I E S

Contact Us

 +971 4 248 3400,  +971 55 162 3236

 info@tanamiproperties.ae

For More Info...

www.tanamiproperties.com/Projects/Gharbi-I-Residences



3405, Marina Plaza, Al Marsa Street, Dubai Marina, UAE